



YMF Car Parts

www.ymfcarparts.co.uk

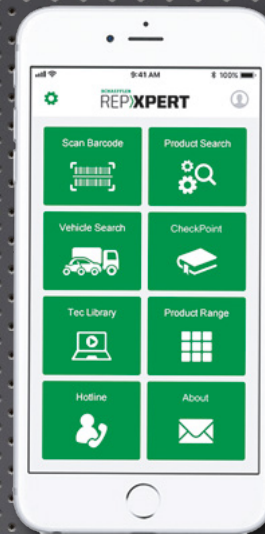
SMART CHOICE

ISSUE 70 • AUG - OCT 2023

THE SMART CHOICE FOR TODAY'S TECHNICIAN!

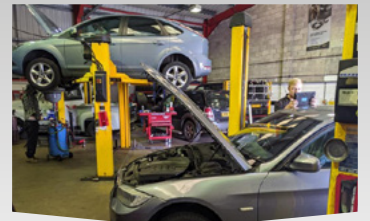
ABOVE AND BEYOND!

BRINGING YOU MUCH MORE THAN JUST PARTS



IN THIS ISSUE

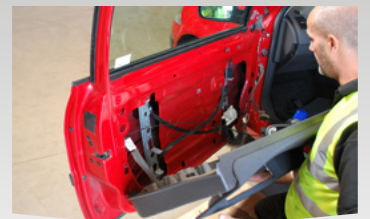
UK WORKSHOPS BENEFIT FROM REVISED BLOCK EXEMPTION ORDER



INVESTIGATING BRAKE FADE WITH ALLIED NIPPON



NEW! LIKE FOR LIKE WINDOW LIFT REGULATORS FROM ELTA



SUPPORTING YOUR BUSINESS TECHNICAL TRAINING, PRODUCT SUPPORT & EXPERT ADVICE DIRECT FROM LEADING MANUFACTURERS.



CALL YOUR LOCAL YMF BRANCH TODAY

HARROGATE
Tel: 01423 223940

LAYERTHORPE
Tel: 01904 628828

MALTON
Tel: 01653 602700

POPPLETON
Tel: 01904 917280

SCARBOROUGH
Tel: 01723 413104

SELBY
Tel: 01757 403300

THIRSK
Tel: 01845 421421



ABOVE AND BEYOND BRINGING YOU MORE THAN JUST PARTS.

As an independent business, we understand that our relationship with our valued customers, staff, and suppliers is the key to our continued development.

We take immense pride in partnering with reputable suppliers who share our commitment to quality and excellence. Their dedication to providing us with reliable and top-quality products ensures you receive the best for your customers. From engine components to braking systems, we work hand-in-hand to give you access to a comprehensive range of high-quality parts that meet the rigorous standards of our industry. Within the pages of our Smart Choice publication, you'll find product information, expert advice, and innovative support solutions, specifically designed to assist independent workshop customers.

But our commitment to you doesn't stop there. We recognise that knowledge is power, and staying updated with the latest advancements is vital for your success. That's why we work with many industry leading component suppliers and manufacturers to provide

technical support, information, and training. Whether it's specific product fitting instructions, model specific known faults, or general technical training, our aim is to provide as much information as possible to assist your staff and business, beyond the purchase of the parts.

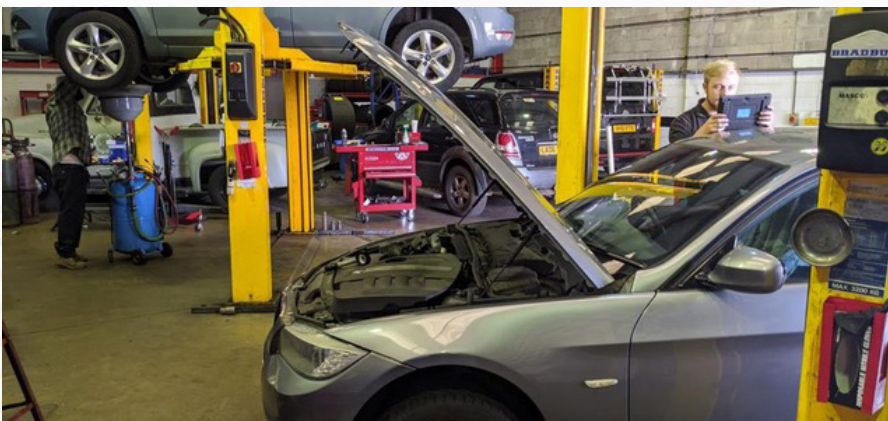
Other initiatives include the recently introduced Smart Tech magazine, a publication dedicated to all the latest in equipment, tools, diagnostics, and technical information, all at market-competitive prices. Our aim is to provide our customers with not just the knowledge, but the right tools to tackle even the most complex of jobs, efficiently and effectively. If you've not seen it, then ask your local branch for a copy today.

As we embark on this journey together, we want to express our gratitude for your continued support and trust. Our mission is to provide you with the resources, expertise, and unwavering commitment to help your business thrive. We invite you to explore The Smart Choice and Smart Tech magazines and discover what we and our suppliers have to offer.



LANDMARK AFTERMARKET REVISIONS IN NEW MOTOR VEHICLE BLOCK EXEMPTION ORDER (MV-BEO) NOW IN UK LAW

UK AFCAR's lobbying ensures several gains for independent aftermarket operators, including wider access to vehicle repair and maintenance data and information.



UK AFCAR, the lobbying coalition comprising UK trade federations and commercial organisations, has secured critically important gains in the revised Motor Vehicle Block Exemption Order (MV-BEO) ensuring effective competition and choice for millions of UK motorists.

In the accompanying guidelines, UK AFCAR has secured full access

and recognition for independent garages, parts distributors and parts suppliers / manufacturers to full repair and maintenance information and data from vehicle manufacturers.

For parts distributors, as well as the workshops who finally fit these parts, software and coding must now also be made

available to ensure their ability to complete vehicle repairs. Importantly, the inclusion of the reference to Chapter II of the UK Competition Act introduces the basis for 'horizontal' agreements between vehicle manufacturers and independent operators.

The previous Motor Vehicle Block Exemption Regulations (MVBER) expired on 31 May 2023, with the new post-Brexit competition law and guidelines now in effect. Months of intense lobbying by members of UK AFCAR has created significant improvements when compared to the European MV-BER and guidelines, in particular, clearer definitions to support the way vehicles are diagnosed, repaired and maintained.

References are also made in the guidelines to the type approval requirements for access to RMI,

which will also need to be revised to ensure continued effective competition that supports consumer choice and affordable mobility.

Mark Field, IAAF Chief Executive and UK AFCAR chairman said:

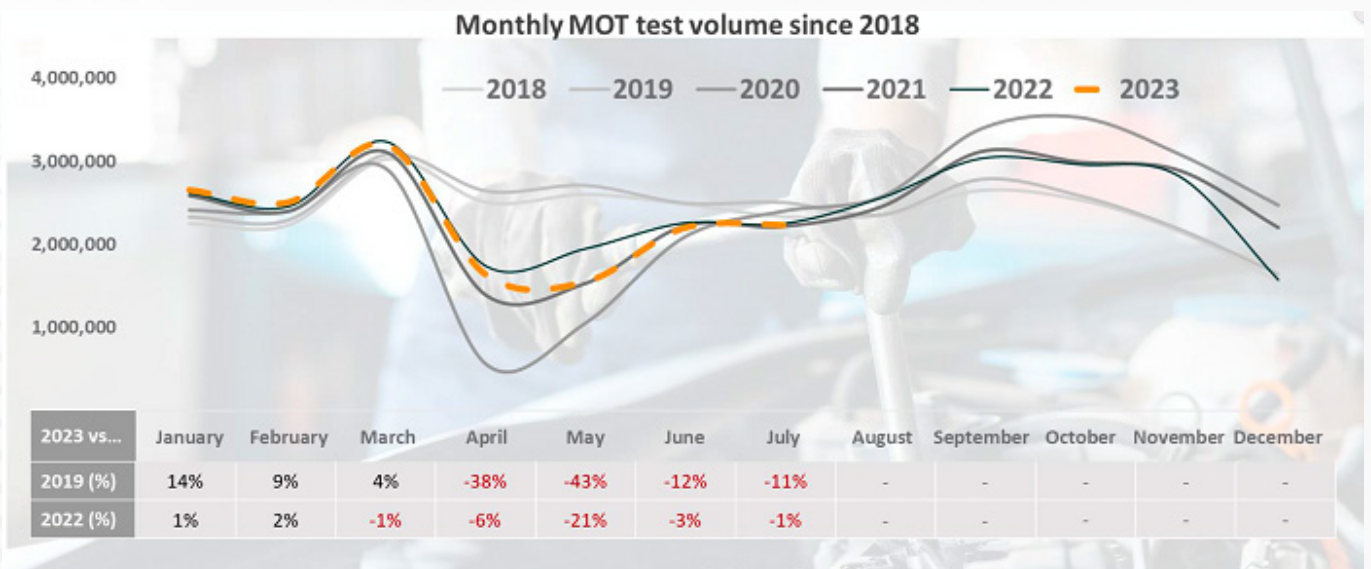
“This is major achievement for the independent automotive aftermarket, and I would look to pay tribute to the intense work of UK AFCAR and its members, Neil Pattermore and our colleagues in FIGIEFA. I'd also like to acknowledge and thank CMA

for their detailed understanding of the need to protect consumer choice and their commitment to working with UK AFCAR to ensure compliance of MVBE0.”

DATA SHOWS BEGINNING OF COVID-19 MOT TREND CORRECTION



Data from DVSA and the IAAF Garage Network suggests a levelling out of the MOT trend brought about by the coronavirus pandemic. More motorists are now resorting back to summer MOTs, having had the test extended during Covid-19.



This also backs up the overwhelming evidence and lobbying from the industry, trade associations – such as IAAF and coalition partners within UK AFCAR – and motorists to maintain an annual MOT test frequency and the current 3-1-1 test.

IAAF has identified that there is a clear need – and opportunity – to support motorists on the safety benefits of carrying out regular MOT tests. MOT testing stations and testers need to be better supported

in communicating to motorists on why the MOT test is in place. Much is done on the importance of roadworthiness but more needs to be done to promote the relationship between the motorist and the workshop carrying out the test.

The number of customers having both MOT and services done together is dropping also, as people look to spread costs.



AUTO AIR GLOUCESTER LTD ARE THE BIGGEST INDEPENDENT SUPPLIER OF AIR CONDITIONING PARTS, TOOLING AND CONSUMABLES

Experience the Auto Air advantage. Quality, reliability, and unparalleled service, when you buy Auto Air from any of our branches.

Auto Air Gloucester Ltd is known for its unbeatable range and unwavering quality. That's why we're proud to partner with Auto Air, delivering their products straight to your garage door.

Auto Air is the largest independent provider of air conditioning components, tooling, and consumables in the UK, and we have access to their vast assortment of original equipment products straight from our shelf, or for next-day delivery, ensuring second to none availability.

Purchasing your air conditioning product from us means direct access to Auto Air's dedicated technical support. For any technical enquiries, our highly skilled team is ready to assist you in leveraging Auto Air's expertise, to help with technical fitting information and support.

We have access to Auto Air's unique position as an authorised UK distributor for Sanden and the exclusive UK distributor for Elke. Ring us today to access the largest stock of tooling & consumables, including R134A, HFO 1234YF, and R744 (Co2) products.

Additionally, we stock a wide variety of Auto Air's OE and aftermarket compressors, all of which come with a 3-year warranty. And don't forget about the Coolzone condensers! Zinc-coated for extra durability and supplied with a 3-year warranty. All are readily available.

**CONTACT YOUR LOCAL
BRANCH & ASK FOR
COOLZONE**



When you choose to buy Auto Air products through us, we guarantee the best availability, quality, and support.

In partnership with Auto Air, we strive to keep you cool and your business running smoothly this summer.

Ring us today for all your air conditioning requirements!

**Cool
Zone**
Automotive



NATIONAL

UK's Leading Repackager and Distributor for **Honeywell Solstice®** yf Refrigerant

Is the Clock Counting Down On R134a?

The refrigerant R134a, with a GWP (Global Warming Potential) of 1,430, has been used as the coolant of choice in our car air-conditioning systems for almost 30 years, but that could all be coming to an end sooner than you may think. In 2017 it became illegal to manufacture cars in Europe using a refrigerant with a GWP over 150, so most now contain the refrigerant R1234yf (GWP 4).

To encourage the change to more environmentally friendly refrigerants, a new quota system was introduced in 2015 meaning anyone wanting to manufacture or import these F-Gases into Europe, (inc. UK), must have a legitimate registered quota. This quota system has planned reductions every 3 years throughout its 15-year phase down program.

As quota allocations are cut, refrigerants with higher GWP's become less available and more expensive, to the point where it is no longer economically viable to produce them. At some point this will happen to R134a, and with 21M cars registered in the UK before 2017, a significant proportion of these will still rely on R134a to run their AC systems.

The next planned quota reduction is due soon and will take the overall quota down to just 31%. This may only be a 14% cut of the original 100%, but it is equivalent to almost 30% of 2023's availability. The current F-Gas legislation in Europe is also under review, calling for the 14% cut to be increased to almost 24%. This equals a reduction of almost half of this year's availability. When the UK left the European

Union it adopted Europe's current F-Gas legislation directly into UK policy. It is currently unconfirmed as to whether any changes to the E.U policy would also be adopted into UK legislation.

One thing however is clear, by the end of 2023 there will be at least 30% less available quota from 2024 to 2027. Eventually there won't be any original R134a cars left on UK roads, apart from a small number of classic cars. The question is, will the supply of R134a last long enough? Unfortunately, R1234yf cannot be used in R134a systems due to its flammability, and should only ever be used in a system specifically designed for using flammable refrigerants.



Honeywell Solstice® R1234yf is the
chosen fluid for all manufacturers
in their A/C systems

www.nationalref.com



Delphi Technologies

CAR CHANGES ARE INCREASING DEMANDS ON IGNITION COILS

The foundation of ignition coil technology remains unchanged, with windings around an iron core. Typically, the primary winding is connected to the battery, with the secondary winding connected to the spark plugs. Cycling on and off then sparks combustion.

Yet the rise of start-stop, hybrid and smaller engines by vehicle manufacturers chasing greater efficiency under stringent emissions regimes has hugely ramped up the demands now placed upon ignition coils.

In addition to having to generate up to 45,000 volts for efficient combustion, the operating environment is now likely to see greater temperature fluctuations, more high load start cycles, improved performance expectations and weight reductions - all within an engine bay where space is at a premium.

Ignition coils today deliver the high electrical loads of starting cycles far more frequently, due to start-stop and hybrid engines. Short urban journeys can extend gaps and increase starting cycles further. Ignition coils still need to reliably deliver a strong spark at the right time to the right cylinder, thousands of times per minute.

Delphi's global OE expertise ensures every coil in the range is built to stringent specifications, so garages can trust performance. Construction uses high quality wiring, insulation and coatings, along with efficient windings. Vacuum production ensures air bubbles are removed from materials to prevent arcing or shorting.

All Delphi ignition coils will also have been subjected to thousands of hours of testing before being released for sale to ensure they are durable enough to withstand vibration, high temperature and moisture over many years.

Delphi has recently developed multi spark ignition coils, which are being introduced to the aftermarket too. They fire multiple sparks rather than a single spark on each cycle, to burn fuel more efficiently.

Delphi's UK and European range occupies a market-leading position, with 89% car parc coverage, and particular strength on hybrids. There are over 430 coils in the range, comprising oil filled, cassette, pencil, coil on plug, distributor coil and distributorless coil types.

Delphi says garages should be aware that all genuine Delphi ignition coils will be logo etched, and boxes are sealed with a hologram label to help prevent forged products entering the market.

Today, Delphi is focused not just on the reliable supply of high quality parts to motor factors, but also upon providing complete workshop solutions to independent garages. The Masters of Motion hub (launched in January '23) includes a video on 'How to Replace an Ignition Coil'. New video content is being added weekly, with 'How to Test Ignition Coils' going live as recently as mid-June.

Delphi also provides a complete range of conventional and online training through its fast growing Delphi Academy platform. Garages can find out more now by visiting <https://mom.delphiautoparts.com/en>.

MASTERS OF MOTION

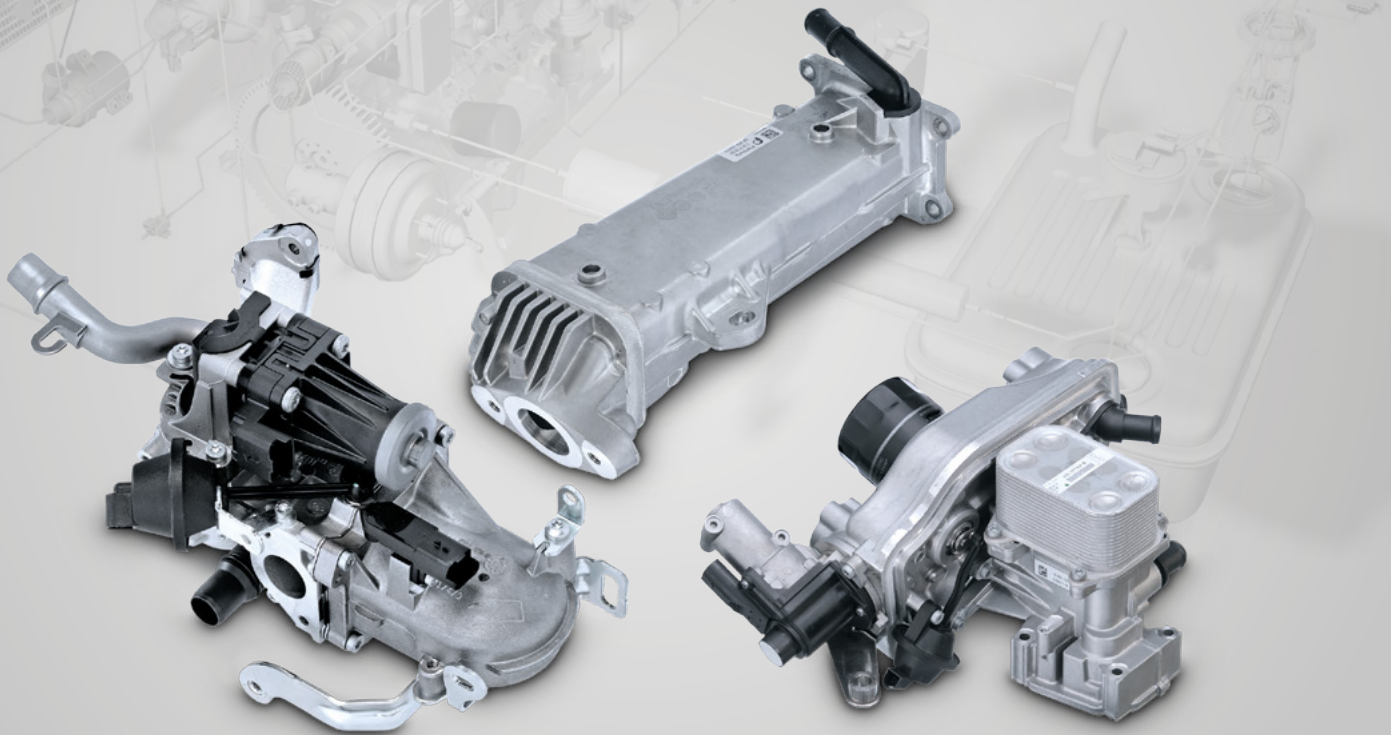
Scan here for more information
Visit the **Masters of Motion hub**



[delphiautoparts.com/en-gb/workshop-solutions/delphi-academy](https://mom.delphiautoparts.com/en-gb/workshop-solutions/delphi-academy)



PIERBURG



SYSTEM KNOWLEDGE

COOLED EXHAUST GAS RECIRCULATION FOR EVEN LOWER POLLUTANT EMISSIONS

Cooled exhaust gas recirculation (EGR) and standard EGR are two techniques used in internal combustion engines to reduce nitrogen oxide (NOx) emissions.

Standard EGR involves recirculating a portion of the engine's exhaust gas back into the combustion chamber, reducing the available oxygen and peak in-cylinder temperatures, thereby lowering NOx formation.

In contrast, cooled EGR incorporates an additional step of cooling the recirculated exhaust gas before reintroducing it into the combustion chamber. This cooling process is typically achieved using an EGR cooler, which further reduces combustion chamber temperatures and enhances the NOx reduction effect. By lowering temperatures, cooled EGR significantly decreases the formation of nitrogen oxides.

Pierburg, a specialist with many years of experience in emission control, is an expert original equipment (OE) supplier of systems for cooled exhaust gas recirculation.

Rheinmetall, based on their experience in the development and manufacture of EGR systems, has designed a range of EGR cooler modules that enable precise cooling of exhaust gases.

The new EGR cooler modules provide an effective solution for replacing worn or faulty components in the EGR system. They feature compact modules with integrated EGR valve and bypass flap, ensuring reliable functionality. The modules are built with high-quality stainless-steel housings to withstand extreme conditions, including aggressive exhaust gas condensate, high temperatures up to 700 degrees, and pressures up to 3 bar. They are suitable for use in over 8 million diesel-powered passenger cars, including Audi, Seat, Škoda, and VW.

Need an EGR cooler module? Then call us today!

www.ms-motorservice.com

PASSION FOR TECHNOLOGY.



RHEINMETALL



TIME FOR CHANGE

A component replacement often overlooked during routine garage service is the cabin filter.

This vital barrier against airborne particles, pollutants, and allergens that can enter a vehicle's interior through the ventilation system, plays a crucial role in filtering out dust, pollen, smog, exhaust fumes, and even mould and bacteria, providing occupants with clean and fresh air. A well-maintained cabin air filter enhances the overall driving experience and contributes to the well-being and health of passengers, particularly those with respiratory conditions or allergies, such as hay fever. Asthma and hay fever cases are rapidly increasing due to environmental changes, including climate change and heightened levels of air pollution in towns and cities.

Many vehicle owners remain unaware of the existence and impact of the cabin air filter on air quality and health. Consequently, they do not consider it a priority when it comes to replacement as part of a routine service. On this basis, workshops can often focus primarily on what the driver might consider essential, for example the oil, fuel, and air filters. The cabin filter can be deemed an unnecessary extra expense that does not impact the vehicle service requirements or warranty.

But a dirty or clogged cabin air filter restricts airflow, reducing ventilation and air circulation within the vehicle's cabin. This can cause unpleasant odours, increased humidity levels, and the accumulation of airborne pollutants. Moreover, restricted airflow can impact the performance of defrosting and demisting functions, affecting visibility and occupant safety. Although the majority of drivers will be

unaware, if the cabin filter is clogged the vehicle's pollutant concentration can increase up to six times that of the outside air.

Also, there is an element of potential future financial outlay for the driver, in that neglecting the cabin air filter puts additional strain on the heating, ventilation, and air conditioning system, especially on the blower motor. This increased workload can lead to reduced cooling or heating efficiency, with many drivers simply turning the fan speed up to combat the unseen problem. To conclude, a well-maintained cabin air filter ensures optimal HVAC system performance and extends its lifespan.

Now is the perfect time to talk to drivers about the importance of cabin filtration and the vital role it plays in maintaining a healthy driving environment. And, given that in the summer the pollen count is at its highest, and the general air quality is often at its lowest, let's start that conversation today. If your customer suffers from hay fever, it is advised to change their cabin filter more often than the standard manufacturers service interval, usually annually.

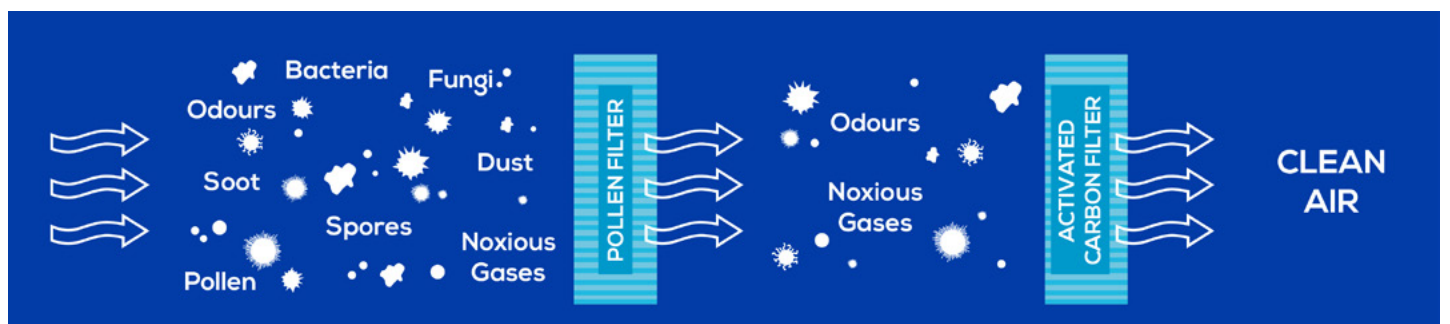
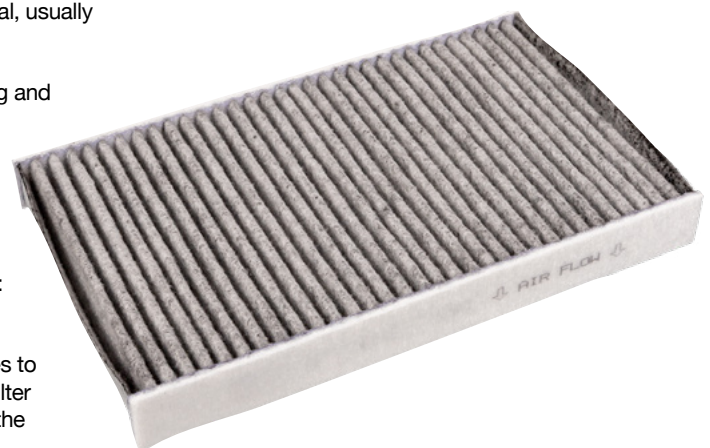
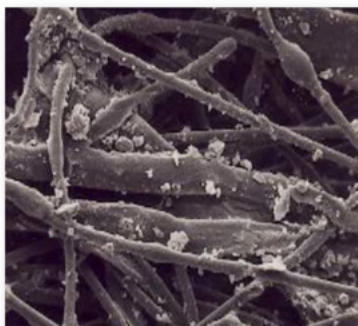
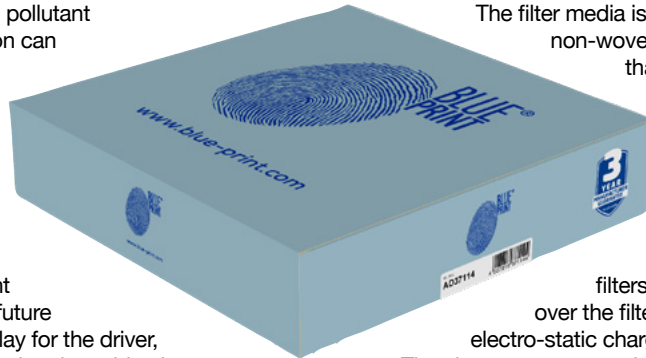
When it comes to purchasing and replacement, then choose Blueprint. All Blueprint cabin filters are designed to match factory specifications and utilise advanced technologies to ensure optimal performance:

Blue Print's cabin filters are designed to filter out particles to the same level as the OEM filter and combine some or all of the

following technologies to achieve this. The filter media is made from a non-woven synthetic fibre that uses advanced melt-blown technology to give it form and strength.

In the case of Electrostatic filters, as air passes over the filter fibres, an electro-static charge is generated. The charge attracts particles as small as 0.3 microns, including bacteria and diesel soot nanoparticles. Particles between 0.3 microns and 0.9 microns pose a great risk to our health, as these are too small for the tiny hairs that line our noses to filter, but large enough that they cannot be exhaled.

Activated carbon cabin filters take filtration to the next level. Tiny particles of carbonised and crushed coconut shells are embedded in the element. These activated carbon particles contain channels that trap noxious gases, such as Nitrogen Oxides (NOx), emitted by petrol and diesel engines, as well as other industrial processes. One gram of activated carbon has a surface area of over 1,000 square metres and is the main active ingredient in gas masks. The carbon eventually becomes loaded during the service life of the filter.





RIGHT FIRST TIME

Braking components are vital to the safe running of your customer's vehicle.

However, the key to optimum performance is the quality of the components being fitted, to ensure service life and avoid excessive wear between service intervals.

'Lightweight' brake discs are being advertised in the aftermarket to increase fuel economy, but are these really the best option?

To be competitive, some manufacturers cut their production and distribution costs by reducing the quantity and quality of materials used during manufacture. Reduced weight can reduce the discs ability to dissipate heat, which can have a detrimental effect on the efficiency of your customer's brakes.

Cutting costs often means cutting quality. This can lead to more problems in the future, with drivers experiencing issues such as brake judder.

A major cause of brake judder is disc thickness variation (DTV), which is commonly misdiagnosed as 'warped' discs. This occurs when the brake disc becomes worn in a single area of the disc's surface and is often caused by excessive run-out.

OE Matching Quality

Blue Print supplies an extensive brake friction range containing over 3,400 braking components, including discs, pads, shoes, fitting kits and more. All parts are researched, specified and manufactured to be OE matching replacements in accordance with ECE-R90 regulations, allowing Blue Print to offer a 3 year unlimited mileage warranty against manufacturing defects, guaranteeing superior quality.

Precision casting and finish provide consistent quality and stable braking performance to ensure long service life on braking components. Blue Print has strong coverage of Asian and European vehicles, with fitting kits available within the range for parts such as brake shoes.

With an impressive range of brake components including high-carbon discs, with high resistance to wear, ensuring long service life, Blue Print has the right braking solution across its range.

Call Us Today...



Blue Print Braking at a Glance

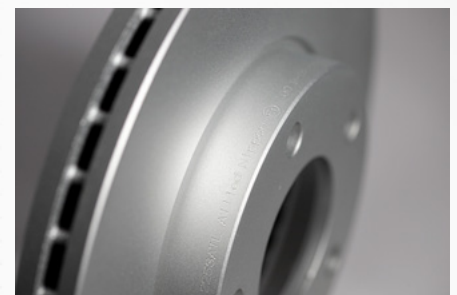
- Complete all-makes range of more than 3,400 brake friction components for Asian and European vehicle applications
- Coverage of over 98% of all popular passenger cars and LCVs on European roads (launched from the year 2000 and onwards) for brake discs and pads
- Keeping pace with every new vehicle released into the market following our 'Fast to Market' philosophy
- Use of official manufacturer electronic parts catalogues ensures ultimate levels of accuracy
- All components are developed and manufactured to meet OE specifications and to be direct replacements
- Rigorous and systematic quality checks to assure the continuous supply of quality products

The entire range of Blue Print braking components can be found at: partsfinder.bilsteingroup.com



WHAT IS BRAKE FADE AND WHY DOES IT OCCUR? ALLIED NIPPON HAS THE ANSWER!

Fresh from announcing that technicians now have access to Allied Nippon coated brake discs, the world class braking brand is back to demonstrate its expertise by diving into its technical glossary. Here the renowned brake pad manufacturer examines a phrase often uttered in workshops: 'brake fade'.



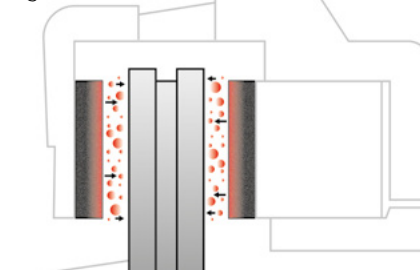
CAUSES OF BRAKE FADE

Regardless of the component that is failing, brake fade typically occurs when excessively high temperatures are generated from heavy braking or load. This can see brake fade occur for two main reasons:

1. MATERIAL TRANSFER: As a result of very high braking temperatures the friction material of a brake pad begins to break down and adhere to the disc. The pad then contacts with an irregular surface causing premature wear to both pad and disc, which can result in brake judder and, ultimately, brake fade.

2. GAS SLIDE: Brake fade can also be attributed to 'gas slide', a term Allied Nippon has coined to describe how resins inside a brake pad turn to gas at high temperatures.

Fig 1



A layer of gas forms between pad and disc, causing the pad to literally 'slide off' the disc and, consequently, brakes to

fade (See fig 1). As temperatures calm, this gas will dissipate and reliable, normal braking will return. Constant exposure to such temperatures, however, is likely to permanently damage a brake pad, as its essential resin content would all 'burn off' into gas.

THE IMPORTANCE OF BEDDING-IN! To help avoid these issues, technicians fitting new brake pads and discs should always strive to educate their customers on the importance of 'bedding-in'. Allied Nippon recommends that, unless the situation requires, customers should avoid heavy braking during the first 300 miles post fitment.

Modern, high quality brake pads and discs are highly unlikely to suffer brake fade if bedded-in correctly, used within normal driving conditions, and changed in-line with manufacturer's recommended service intervals. Allied Nippon is also encouraging drivers to really think about the brake pedal! The harder it is worked, the higher the loads, and the greater the braking temperatures, thus increasing the potential for brake fade and the jeopardy that can create for the motorist.

TRUST ALLIED NIPPON Whilst all braking products can be susceptible to issues in the face of consistent misuse or a failure to bed-in, choosing a brand with quality you can trust is nonetheless important. And, by consistently delivering

reliability and braking performance, trust is something that Allied Nippon has engendered with technicians across Europe.

Underpinning Allied Nippon performance is the brand's comprehensive quality testing regime. For example, its brake pads are designed, manufactured, and tested to perform at searing temperatures; in fact, performance is validated up to 700°C to guarantee performance in all conditions. Allied Nippon coated discs are also scrutinised with a 100% dynamic balance check, meaning each and every disc is perfectly balanced to deliver impeccable stopping power.

Why does Allied Nippon go to these lengths? In short, to ensure its products can deliver in real-world scenarios that go beyond the norm. A motorist heading off on holiday for example, might attach a heavy, overloaded trailer to their vehicle, and this additional load increases the potential for elevated temperatures where brake fade could occur.

Allied Nippon's meticulous approach to quality makes the original equipment manufacturer the ideal partner, and technicians can fit Allied Nippon safe in the knowledge they are installing world class braking to their customers' vehicles.

For more information...

To discover more about the Allied Nippon range, installers can download a comprehensive product brochure at <https://tinyurl.com/Allied-Nippon-Brochure>.

SPOTLIGHT ON: SUSPENSION MOUNTING KITS

KYB
Our Precision, Your Advantage

Just like a shock absorber, a suspension mounting kit is pushed and pulled 1,500 times per mile – over the course of 50,000 miles, this small but important component has moved up to 75 million times.

Imagine how that amount of work will deteriorate the rubber components in the mounting kit. Worn mountings have an adverse effect on ride control and safety. Mount wear depends on the type of travel, driving characteristics and the individual vehicle. However, a good guideline is that if the struts are worn out, the mounts will probably be worn out too. As such, mounting kits should be replaced every time the struts are replaced.

Mounting kits provide a rubber cushion between the chassis and suspension, helping to reduce stress on the suspension by absorbing vibration. There is also a bearing in front mounting kits which allows the steering wheel to turn the suspension column and the wheels. It returns the steering wheel smoothly back to its natural straight position if released. Suspension mounting kits can affect the angle of how the shock absorber sits – if the rubber is worn, it can cause extra stress on surrounding components. Worn bearings also create knocking noises, something noticed even more in hybrid and electric vehicles due to the quietness of the engine.

HOW TO DIAGNOSE WORN MOUNTING KITS

Test driving vehicles (especially those over 50,000 miles) is a key part of diagnosing suspension issues, including mounting kits, and helps to explain the issues to the motorist. Find a short circuit near to your workshop that comprises the following tests:

- Bumpy road surface and/or speed bumps (useful when detecting ride harshness).
- Listen for noises, feel for steering wheel vibration and any irregularities with the steering.
- Turn the steering wheel and release your hands - does it return to its natural straight position?

- When returning to the workshop, eliminate any other factors such as any excessive movement in the other suspension components, including balljoints and bushes.

VISUAL INSPECTION TIPS

Broken / cracked metal – rubber joint: This could have been caused by aggressive driving or road conditions, such as potholes and uneven surfaces. It can result in excessive vibrations transferred to the vehicle's steering system and driver, decreasing comfort, increasing fatigue, changed damping parameters of the suspension, accelerated wear of the suspension and co-operating components.

Seized bearing – This could have been caused by incorrect installation if the full weight of the vehicle wasn't applied when tightening the nuts to the required torque. It can result in excessive vibrations transferred to the vehicle's steering system and driver, increased force will be required to move the steering wheel, the steering wheel will not return to a straight position once the steering wheel is released, and there will be noise coming from the suspension.

Deformation of top mounting support bearing – This could have been caused by excessive axle load, or aggressive driving or road conditions such as potholes and uneven surfaces. It can result in excessive vibrations transferred to the vehicle's steering system and driver, changed damping parameters of the suspension, and noise coming from the suspension.

KYB offers a range of full mounting kits with the part number prefix SM - this means the mount, bearing, and all nuts, screws and other accompanying items are included. As such, take care when comparing the price of mounting kits from different companies - many of them will not offer the full kit, influencing the price of the unit.

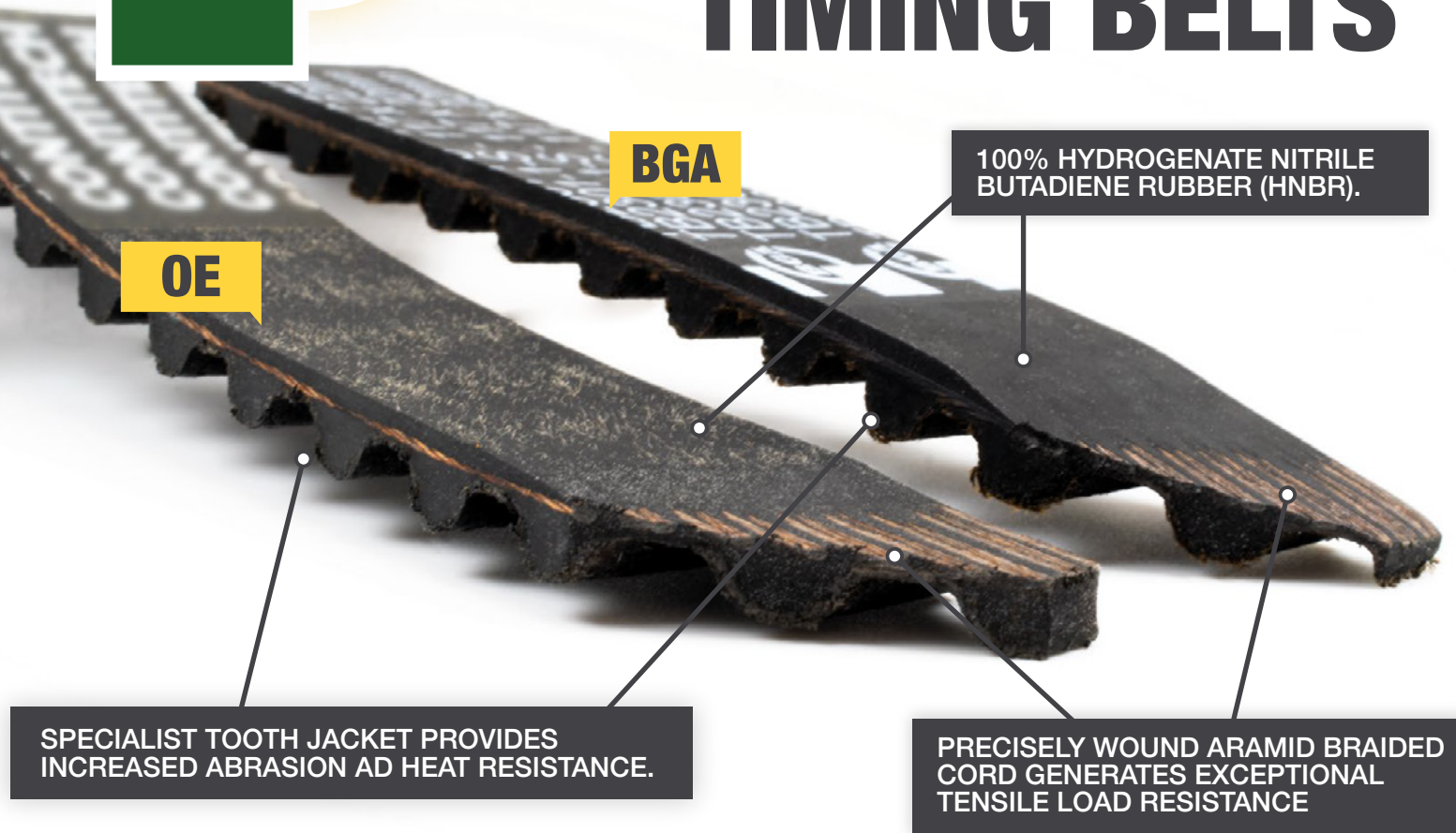


SCAN HERE TO VIEW KYB'S
FULL PRODUCT RANGE





SPOT THE DIFFERENCE? BGA vs. OE TIMING BELTS



MARKET LEADERS IN TIMING

TIMING BELT KITS FROM BGA

Belt(s) • Tensioner(s) • Idler(s) Bolt(s) • Water Pump.

ARMED TO THE TEETH WITH QUALITY

HNB Rubber, Aramid Cord, Tooth Jackets, OE Bearings.

TESTING PROCESS TO OUTPERFORM OE

CAE stress analysis, hardness and roughness test, bespoke real-life simulation until failure vs OE equivalent to ensure BGA outperforms.



www.bgautomotive.co.uk





ADVANCED F1 FLUID TECHNOLOGY NOW AVAILABLE FOR EVERYDAY CARS

David Aldous, OEM Business Development Manager at Petronas Lubricants

Technological motorsport advancements are helping everyday drivers worldwide enjoy new levels of engine performance



As the pinnacle of motoring technology, it's no surprise that numerous innovations first developed in Formula One have slowly trickled into the ordinary road vehicles we drive today. Take the carbon fibre chassis first pioneered by the McLaren team in the 1980s, or even our steering wheel radio controls that began life in F1 as engine switches.

However, one area of innovation in which F1 might appear to be lacking is maximising engine efficiency. After all, the main aim within F1 is simply to build the fastest car, with other goals seemingly a secondary concern. But that all changed with new rules introduced by Formula One's governing body in 2014.

Ever since Formula One cars have been using hybrid components to minimise fuel consumption, harnessing their own energy produced by the car during a race and redeploying it as part of the power unit's output, it has been advising the development of everyday road cars. Recently, in 2022 the rules in F1 racing were tweaked further to mandate more efficiencies and will change again in 2026, by which time cars must use significantly less energy and produce net-zero exhaust CO2 emissions.

In response to these rule changes, the accessories that support F1 power units, such as engine lubricants, are seemingly more advanced than ever. One high-profile example of this is PETRONAS Syntium, the engine oil first used by the Mercedes-AMG PETRONAS F1 Team in each of their eight consecutive Constructors' Championship-winning seasons.

Most modern engines only convert around 33% of their potential fuel energy into power, meaning much of the useful energy produced by cars globally is sadly lost to engine inefficiency. Plus, excessive heat can also damage critical engine parts like turbochargers, pistons, and bearings, causing costly breakdowns. Here's where PETRONAS Syntium saves the day.

Through a 2022 reformulation and the addition of new 'CoolTech+ Technology', the engine oil now offers 37.8% stronger protection against the wear of critical parts than previous formulas, preventing engine deposit build-up to extend parts life and lower maintenance costs.

It also provides up to 68% higher oxidation resistance, controlling sludge, delaying oil thickening, and maintaining a stable, protective film for maximum engine performance. And with its ability to control heat by reducing friction, PETRONAS Syntium contributes to cut fuel consumption by up to 3%, which ultimately means less emissions, thus saving motorists money and minimising the environmental impact of driving.

Fausto Lupone, Automotive Sector Expert, Technical Service EMEA at PETRONAS Lubricants International explains: "CoolTech+ technology means whatever the road throws at your engine, it now wastes less energy and maximises efficiency. With enhanced engine protection, PETRONAS Syntium protects critical parts to deliver optimal performance every time." Drivers can learn more about PETRONAS Syntium on the explore-cool.com content hub, which features exclusive tools, guidance, and updates on how to reduce the emissions and fuel costs of your vehicle.

With technological motorsport advancements helping everyday drivers worldwide enjoy new levels of engine performance, it's hard to say what the next transformation that F1 brings to everyday driving will be. But for now, this journey of a thousand miles begins with a single step: PETRONAS Syntium.





ELEVATING THE STANDARD OF REMANUFACTURED CALIPERS

The traditional manual handbrake is swiftly being replaced in favour of the electronic parking brake system, (EPB). This shift is evident in the sales data as of 2022, as a staggering 87% of new UK vehicles are now fitted with an EPB system, up from 70% in 2019.

Auto industry giants like Volvo, Alfa Romeo, BMW, Jaguar, Porsche, and Mercedes-Benz have already transitioned completely to EPBs in their UK passenger car lines. Many other high-profile manufacturers are on the brink of following suit, with only a few models still featuring a manual handbrake. This trend isn't restricted to luxury vehicles either; even popular models like the Vauxhall Corsa have ditched the lever in favour of the button! Apart from the obvious ease of use of the button, compared to a manual hand brake, EPBs allow other driving aids to be added, such as Hill Start Assist and Auto Hill Hold.

As the UK's leading components remanufacturer, our aim is to keep pace with all changes and continue to provide top quality, remanufactured products to the automotive aftermarket, produced in our state-of-the-art facility in Birmingham.

Remanufacturing Process.

The only parts of a brake caliper that are remanufactured are the casting, and sometimes the levers, everything else is brand new. Electric Parking Brake (EPB) calipers are all fitted with new motors. Furthermore, we only remanufacture old units if they pass stringent inspection and quality tests, for example there are no cracks or weak points in the casting.

All calipers are disassembled by hand to avoid damage to delicate parts, such as levers and threads. Units are then shotblasted and thoroughly inspected, with some hand finishing where required, ready for painting.

New Parts.

Each caliper is reassembled by hand. All accessories, such as pistons, seals and motors for EPB units are brand new. In fact, the seals are often better quality than original, due to improvements being made since the new caliper was first released.

Following the remanufacturing process, each caliper is tested beyond the OE specification. It is important to understand that Shaftec do not carry out batch testing,

every single component is tested individually – including pressure testing past normal working conditions.

Warranty.

We are so confident in our quality and remanufacturing processes that all Shaftec Calipers carry a 24 month/24,000 mile warranty, giving workshops and their customers peace of mind that safety critical items have been replaced with top quality units.

For further information, please visit: www.shaftec.com



SCHAEFFLER TRIFINITY™ WHEEL BEARING

State-of-the-art, fully optimised three-row angular contact ball bearing

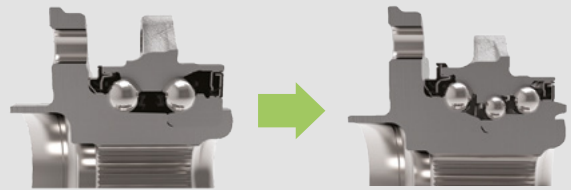
Schaeffler's TriFinity™ wheel bearing offers significantly higher stiffness and longer service life in comparison to conventional two-row ball bearings.

Its ingenious design makes it possible to accommodate higher axle loads within the same bearing size parameters while minimising bearing friction and mass.

Innovative bearing solutions can play a key role in sustainable electrified mobility by making powertrains and chassis systems more energy efficient. Every watt of energy saved in an EV translates into increased range. Vehicle producers are therefore looking closely at every single bearing application as they seek to optimise friction performance and enhance usability for the customer.

Schaeffler's TriFinity product is a triple-row wheel bearing that has been designed for use in electrified powertrains. It uses the same size footprint as a standard two-row ball bearing, but is able to transfer greater axle loads whilst also offering significantly longer service life and improved rigidity.

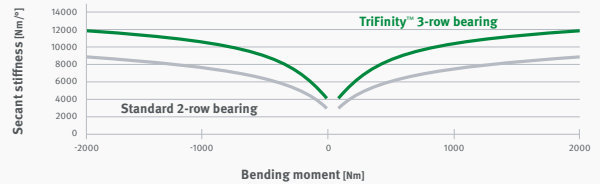
Standard Bearing vs. Trifinity™ Bearing **FAG**



Standard Bearing

TriFinity™ Bearing

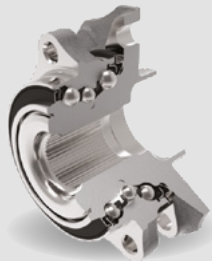
Stiffness + 33%



The advanced ball bearing design provides an alternative to preloaded tapered roller bearing units. Switching from tapered rollers to balls leads to significant improvements in frictional torque and rigidity, resulting in a 0.7% reduction in electricity consumption per vehicle in FTP75 test cycles.

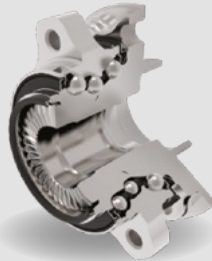
Combining a TriFinity bearing with Schaeffler's face spline technology allows downsizing solutions such as smaller diameter hub units, with reduced bearing and seal friction and weight optimisation, resulting in a smaller carbon footprint. Clearance-free face spline technology can transmit up to 50% more drive torque, reduce noise levels and is also easier to install.

Solution 1: More load density



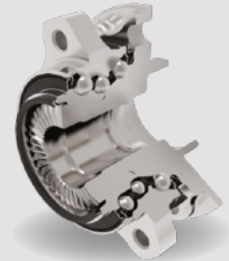
- vs. Standard Bearings
- High stiffness / 33% less deflection
 - 24% more load capacity

Solution 2: Downsizing



- vs. Standard Bearings
- Same capacity / smaller footprint
 - 19% less friction

Solution 3: Design substitution



- vs. Standard Bearings
- Change from rollers to balls / same size
 - Up to 53% less friction

ADVANTAGES



Increased driving performance

- **33%** improved stiffness



Modular design

- **24%** greater load capacity vs. standard design
- Downsizing solution offers further friction reduction vs. standard design



Robust fabrication

- Designed to last for the lifetime of the vehicle
- Optimised sealing performance



Lighter weight

- Helps maximise electric vehicle range
- Helps minimise CO2 emissions in ICE vehicles



53% less friction

- Balances load distribution
- Optimised raceway design
- Friction-optimised grease





Simon's SPECIALIST STUFF

A selection of hard-to-find niche parts that are available!

PART NO: 442-0005



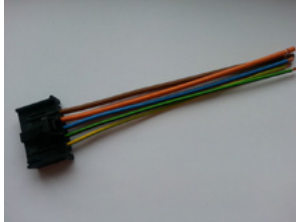
HOT PRICE!

CALL FOR
OUR BEST
PRICES!

HEATER RESISTER

TO FIT: Vauxhall/Fiat/Alfa

PART NO: 442-0023



HOT PRICE!

CALL FOR
OUR BEST
PRICES!

**HEATER RESISTER
WIRING LOOM**

TO FIT: Alfa/Citroen/Fiat/Vauxhall/Peugeot

PART NO: 442-0024



HOT PRICE!

CALL FOR
OUR BEST
PRICES!

HEATER RESISTER

TO FIT: Renault

PART NO: 442-0025



HOT PRICE!

CALL FOR
OUR BEST
PRICES!

**HEATER RESISTER
WIRING LOOM**

TO FIT: Renault

PART NO: 705-0034



HOT PRICE!

CALL FOR
OUR BEST
PRICES!

THERMOSTAT MODULE

TO FIT: PSA Group

PART NO: 705-0036



HOT PRICE!

CALL FOR
OUR BEST
PRICES!

**THERMOSTAT
COOLANT - AM**

TO FIT: Ford

PART NO: 705-0031



HOT PRICE!

CALL FOR
OUR BEST
PRICES!

**THERMOSTAT HOUSING
AND SENSOR**

TO FIT: Dacia/Renault

PART NO: 705-0032



HOT PRICE!

CALL FOR
OUR BEST
PRICES!

COOLING FLANGE

TO FIT: Landrover

PART NO: 175-0064



HOT PRICE!

CALL FOR
OUR BEST
PRICES!

GEARBOX MOUNTING

TO FIT: Ford

PART NO: 175-0065



HOT PRICE!

CALL FOR
OUR BEST
PRICES!

**TOP STRUT MOUNTING
AND BEARING KIT**

TO FIT: Ford

PART NO: 175-0066



HOT PRICE!

CALL FOR
OUR BEST
PRICES!

**TOP STRUT MOUNTING
AND BEARING KIT**

TO FIT: Ford

PART NO: 175-0067



HOT PRICE!

CALL FOR
OUR BEST
PRICES!

**TOP STRUT MOUNTING
AND BEARING KIT**

TO FIT: Ford



Simon's SPECIALIST STUFF

A selection of hard-to-find niche parts that are available!

PART NO: 800-0084



HOT PRICE!

CALL FOR
OUR BEST
PRICES!

**FRONT WIPER MOTOR
& LINKAGE (MAGNETI
MARELLI)**

TO FIT: Fiat

PART NO: 800-0096



HOT PRICE!

CALL FOR
OUR BEST
PRICES!

**WIPER MOTOR &
LINKAGE (AM)**

TO FIT: Vauxhall

PART NO: 800-0053



HOT PRICE!

CALL FOR
OUR BEST
PRICES!

**WIPER MOTOR &
LINKAGE - OEM**

TO FIT: Fiat

PART NO: 349-0020



HOT PRICE!

CALL FOR
OUR BEST
PRICES!

EXPANSION TANK- AM

TO FIT: Vauxhall

PART NO: 584-0012



HOT PRICE!

CALL FOR
OUR BEST
PRICES!

**PEF ADDITIVE
RESERVOIR**

TO FIT: PSA Group

PART NO: 398-0001



HOT PRICE!

CALL FOR
OUR BEST
PRICES!

**PEF RESERVOIR PUMP
REPAIR KIT INC 3LTR
FLUID AND FILL KIT**

TO FIT: PSA Group

PART NO: 2219745



HOT PRICE!

CALL FOR
OUR BEST
PRICES!

SPARK PLUG - OEM

TO FIT: Ford

PART NO: 175-0063



HOT PRICE!

CALL FOR
OUR BEST
PRICES!

**TOP STRUT
MOUNTING FRONT**

TO FIT: Jaguar

PART NO: 278-0009



HOT PRICE!

CALL FOR
OUR BEST
PRICES!

CRANK SHAFT PULLEY

TO FIT: BMW/Toyota

PART NO: 375-0008



HOT PRICE!

CALL FOR
OUR BEST
PRICES!

**FUEL FILTER
WITH HOUSING**

TO FIT: Ford/Volvo/Mazda

PART NO: 394-0003



HOT PRICE!

CALL FOR
OUR BEST
PRICES!

**FUEL PRESSURE
REGULATOR - AM**

TO FIT: Ford

PART NO: 484-0011



HOT PRICE!

CALL FOR
OUR BEST
PRICES!

ADBLUE INJECTOR

TO FIT: PSA Group



Built For The Challenge

Built to Last

Have you ever wondered why some of FAI's link rods have a red securing clip? The red clip signifies a stronger construction of ball joint providing a reassuring repair solution throughout the supply chain. The FAI design is perfect for potholed UK roads as the ball pin pull-out force has been improved by 25 kgf over the original design, making for a long-lasting replacement.

Why doesn't FAI use this technology on all our parts? Really and truly, the process isn't required across the range. As one of the best-established suppliers of Steering & Suspension parts, our partnered factories analyse which applications would benefit from the technology; applied now to over 60 FAI parts.

Vehicle Focus: BMW 5 Series

The BMW 5 series G30 has gained in popularity since its 2016 launch. Despite a modest vehicle parc compared to the 3 series, many have racked up significant mileage, driving demand for repair solutions.

For a full listing of all 20 parts on offer, please visit: faiauto.com/ecat

Range Highlights:

Description

- Tie Rod End L / R
- Rack End
- Control Arm LWR. Front L / R
- Control Arm Upper LH & RH
- Control Arm Front LWR Rear LH
- Control Arm Front LWR. L / R
- Link Rod Rear L / R
- Control Arm Rear L / R



Vehicle Focus: BMW i3

Sales of the BMW i3 spiked in popularity over recent years, strangely, just as it was announced that the i3 was being dropped from the line-up.

With around 30 thousand sold in the UK, there's still demand for some common points of failure.

Range Highlights:

Description

- Control Arm Bush Front LWR Inner L / R
- Control Arm Bush Front LWR Outer L / R
- Rack End
- Link Rod LH
- Link Rod RH
- Tie Rod End LH
- Tie Rod End RH
- Control Arm Front LH
- Control Arm Front RH



The Importance of Regular Transmission Filter Changes For Garages and Customers

There has been a significant shift in the preference for automatic transmissions among UK vehicle owners in recent years, increasing by forty percent over the last five years. Today one in three vehicles on UK roads is now equipped with an automatic gearbox.

The humble, but critical transmission filter plays a critical role in maintaining the health and functionality of the transmission. Knecht, known for its comprehensive filter range, offers a wide selection of high-quality hydraulic filters designed to maximise performance, improve fuel economy, and reduce harmful emissions. These filters are specifically engineered to handle the demands of modern automatic transmissions.

Independent workshops are crucial in educating customers about the importance of regular transmission filter changes. By proactively reminding customers and providing clear information about the recommended service schedule, garages can help customers understand the impact of this maintenance task on their vehicle's reliability and longevity, emphasising the benefits of regular filter changes, such as improved performance, repair costs, and enhanced fuel efficiency. After all, a new transmission replacement doesn't come cheap these days!

Manufacturers typically



recommend changing the transmission oil every 37,000 miles or four years, so, when it comes to replacing the filter, ring us today and ask for a Knecht. Why? Because Knecht hydraulic filters are specially designed with increased wall thickness and stable end plates to handle high pressures in hydraulic systems, ensuring optimal filtration performance.

To simplify the job, why not invest in one of our **MAHLE FluidPRO®** systems, which can replace up to one hundred percent of the transmission oil compared to the thirty to fifty percent replaced in conventional, static oil changes?

FluidPRO® ATX-280 is a high-performance unit boasting a large touch-screen display, a modern graphical interface, and WiFi connectivity. It's equipped with a two-pump system and unique features such as a built-in dipstick function for sealed transmission systems, quick oil change operations, and efficiently used oil drainage. It comes with a comprehensive online database offering detailed procedural instructions and the new

FluidPRO® ATX Remote Viewer App (included as standard).

FluidPRO® ATX-250, while compact, is a powerful model designed for workshops introducing ATF transmission services. It houses advanced electronics that guide all operational phases throughout the process. This model includes an integrated database with vital technical information, an automatic oil flow detection feature to prevent transmission damage, and an optional **FluidPRO® ATX Remote Viewer App**. Moreover, the ATX-250 ensures maximum control over new oil contamination through its Zero Cross-Contamination function and an interchangeable oil canister replacement system.

FluidPRO® ATX Remote Viewer App transmits information from the monitor to a smartphone, making the control of the station operation accessible at any time, making it easy to stay updated with the progress indications of the various work phases, whilst you get on with other jobs. The app is compatible with iOS and Android devices.





Granville®

TRUSTED BRAND FOR OVER 30 YEARS

More than just
an oil company



THE UK'S LEADING MANUFACTURER OF
ULTRA HIGH PERFORMANCE ENGINE OILS,
TAYLOR MADE TO SUIT YOUR VEHICLES
SPECIFIC REQUIREMENTS.

Using the correct engine oil is essential for many different reasons whether the car is a hybrid, petrol or diesel. Not only does it protect all these engine types, it's also critical for emission control, fuel economy and turbo charger lubrication.

Due to additional emission control devices, tighter tolerances in the quest for higher fuel economy and the addition of improved hybrid technologies modern engines face up to 10 times greater stop start events, fuel dilution of up to 30%, water dilution of up to 15% and 20-40°C lower oil temperatures.

START/STOP EVENTS

Start / stop technology has been around for many years now. When first introduced lubricant makers faced significant challenges in protecting vehicles as the oil drains into the sump whilst idle the engine faces a period of additional wear at startup. With the addition of larger batteries – whether traditional ICE or a variant of hybrid, engines in modern vehicles face more and longer stop events as the electrical system supports the vehicle for longer.

FUEL DILUTION

Fuel dilution can take many forms – leaking fuel injectors, incomplete combustion, low engine temperatures, long periods of idle time and frequent short distance driving as some factors. Again, hybrid vehicles exacerbate many of these issues, combined with longer drain intervals, the oil must contend with more fuel contamination than ever.

WATER DILUTION

Fuel contamination and condensation all contribute water to the oil in your vehicle. Traditionally, this has been boiled away regularly as the oil temperature exceeds 100°C however shorter running periods and extended engine stops mean that oil in newer – particularly hybrid vehicles operate mostly below boiling point and therefore water build up becomes an issue in these vehicles.



FS RANGE



Our ultra high performance oils are specifically designed to meet all manufacturer requirements and protect your engine from wear and corrosion whilst maximising performance and fuel economy.



Find the right lubricant for your
vehicle at granvilleoil.com





THINK SYSTEM SMART WITH GATES

For maximum safety, when the timing belt is due for replacement all other parts of the belt drive subject to wear and tear should be replaced at the same time. Replacement with high-quality components that meet or exceed Original Equipment (OE) specifications is your best assurance of continued trouble-free performance. With Gates being a renowned OE supplier to all major car manufacturers, you can be sure our full line of PowerGrip® Kits for the aftermarket is manufactured using the exact same quality standards.

SMART ALL-IN-ONE SOLUTIONS

Replacing all wear parts simultaneously is the best approach to prevent comebacks and profit losses. Gates provides kit solutions with critical extras for virtually every car make and model. With PowerGrip® Kits from Gates, garages can be sure to receive total solutions that include all the technically-relevant components needed to do replacement jobs right first time.

READY-MADE SOLUTIONS TO PERFORM A COMPLETE JOB

By using our recommended full overhaul with PowerGrip® from Gates you will benefit from:

- Restoring the complete system with perfectly matched OE-quality components prevents costly comebacks.
- Ordering only one product saves time and therefore, money.
- One warranty covers all parts.
- A full range available for more than 95% of all European vehicles.
- Detailed installation instruction for accurate installation.

POWERGRIP® KITS FROM GATES

POWERGRIP® KIT

All-in-one kit that contains the OE-quality PowerGrip® belt(s) plus all matching OE-quality metal components and accessories.



POWERGRIP® KIT + WATER PUMP

The same components as a PowerGrip® Kit with the addition of the application-specific water pump.



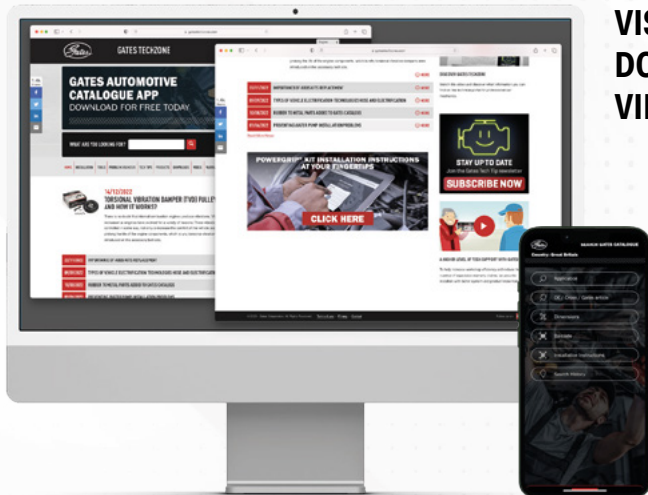
POWERGRIP® KIT + ABDS WATER PUMP

For applications where the accessory-belt-driven water pump can only be reached when the timing belt is removed.

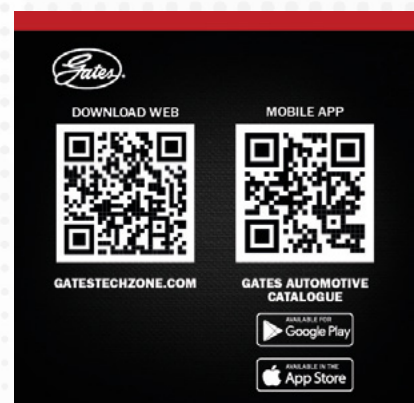


POWERGRIP® KIT + WATER PUMP + THERMOSTAT

For applications where the thermostat sits behind the timing belt drive system.



VISIT GATESTECHZONE.COM FOR THE LATEST DOWNLOADS TECH TIPS AND INSTALLATION VIDEOS





KEEP THE WHEELS TURNING WITH TRUPART

With over 300 bearing kits available, the Trupart range covers the majority of popular UK vehicle applications. The range includes wheel bearings, hub bearings, and ABS sensors. Hub bearing kits contain high-temperature grease in line with OEM specifications, and all necessary fitment accessories are included, such as screws, bolts, split pins, seals, clips, caps, and ABS rings where required. Basically, everything needed to carry out a quality and efficient repair is in the box.

Trupart wheel bearings are manufactured to ISO/TS 16949:2009 quality standard, using only high-quality materials. All bearings are manufactured to industry standards and are laser etched to ensure full production traceability. Trupart is also certified by MAM Software Ltd as an Autocat+ MMI Certified Data Supplier for wheel bearing cataloguing.

The Trupart online catalogue contains information to help select the correct application. It includes physical measurements, thread size, pitch, and whether an ABS ring is fitted. Many listings also contain images and diagrams, so identifying the correct part is much simpler.

TYPES:

GEN 1 - Double row bearing. One-piece outer ring, and 2-piece inner ring. Sealed and lubricated at the factory. Many include magnetic wheel speed / ABS sensors.

GEN 2 - A combined double-row bearing and drive flange. Often include mechanical or magnetic wheel speed / ABS sensors.

GEN 3 - Incorporates two separate flanges and a double-row bearing. The use of two flanges simplifies installation. Many include electronic wheel speed / ABS sensor electronics.

For Trupart wheel bearings, call us today!



Schaeffler OneCode.

One code. Loads of benefits.



One Code

Schaeffler OneCode is a new QR code that is unique to the product in the box, and which will feature on all new and upcoming LuK, INA or FAG packaging.

One Scan

It's easy to use: Simply scan the OneCode from the REXPERT app or using the camera function on your smartphone. Alternatively, visit <https://scan.schaeffler.com> to enter the OneCode manually.

One Access

One simple scan of the OneCode provides instant digital access to all the usual REXPERT product and technical info, including detailed installation instructions and specifications, whilst instantly collecting REXPERT bonus points for members to redeem against workshop clothing, tools and consumables in the bonus shop. That single scan also delivers an authenticity check against purchased products, providing an additional security measure for both parts suppliers and workshops, helping to reduce the chances of fitting a counterfeit part.



Latest technical information

Product information and technical details for each specific repair solution can be accessed with just one simple scan. Updated daily for over 40,000 references.



Product authentication checker

The OneCode can authenticate your Schaeffler purchases, giving both parts distributors and garages confidence in the products they sell or fit. Keep away from counterfeit products!



Detailed repair instructions

Step-by-step vehicle manufacturer instructions and installation guidelines for the product in the box are available through the direct REXPERT link. Digitally, instantly - with no time-consuming searching.



REXPERT bonus points*

Collecting your REXPERT bonus points is now easier than ever with the OneCode. Add points with a click and convert them into valuable information or tools, consumables or clothing for your workshop.

Try it for yourself!

Download the REXPERT app via the QR code links below and use the built-in scanning function, or simply use the camera on your smartphone.



Learn more online:



YOUR DRIVESHAFT SOLUTION

Drive. Steer. Stop. Expert, Shaftec, is reaping the rewards of the smart investment it's made over the past few years.

Shaftec has been in the business of remanufacturing quality driveshafts since 1979, making us experts in our field. The Shaftec range of top quality driveshafts, both new and remanufactured, consists of over 9,900 part numbers.

Shaftec's Driveshaft range is 100% remanufactured in the UK, boasting the widest programme available in Europe. In addition, our new Driveshafts are sourced from premium suppliers and adhere to the ISO 9001:2015 Quality Standard.

Remanufacturing as it should be

To us, remanufacturing isn't just a poorer substitute for "new", it's a process which results in components that are as good as new and perform that way too. Take our range of driveshafts, each one is stripped right back to its bare bones, inspected to ensure that there are no defects, refurbished to the original state and then reassembled by hand, using all new components. That means 100% new ancillary parts, including new CV joints, boots, clips and the correct type and quantity of grease - everything is completely renewed to the highest quality of ISO 9001:2015.



Rigorous inspection after assembly

Following remanufacture, each individual driveshaft is 100% rigorously inspected. That's why, with confidence, we supply a 60 Month, 60,000 Mile warranty on all our shafts. At Shaftec, everything we do is carried out under one roof at our remanufacturing plant in the heart of the UK. We also offer a bespoke 'Reman & Return' service, should an unusual part not be in stock. This unit is dispatched within 3-5 days in bespoke Shaftec branded packaging, and offers the same warranty as the off the shelf, aftermarket product.

New – Popular Axle Shafts now available

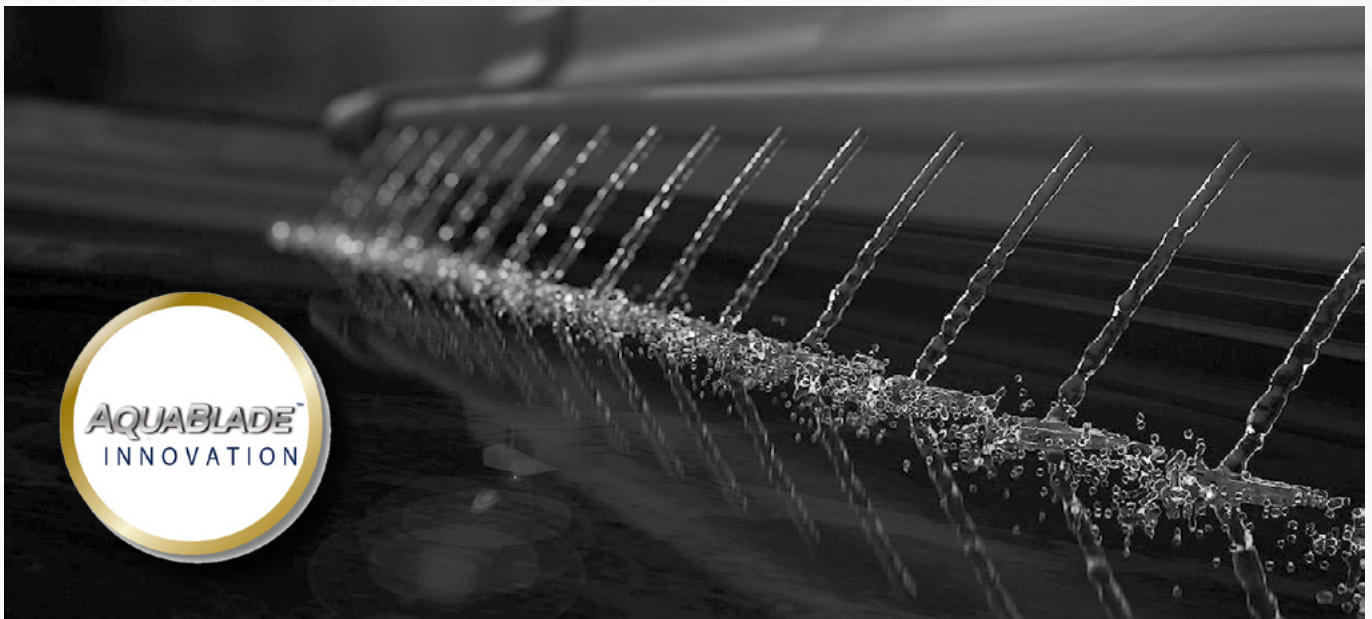
With the huge influx of vans on UK roads, due to consumer demand for online shopping, Shaftec has introduced a range of axle shafts, also known as half shafts, to its range. At launch, the program comprises five popular units, catering for applications from 2007 to date and includes references to fit: Mercedes Sprinter, VW Crafter and Nissan Navarra. Shaftec hopes to see strong interest in this product range, and we hope to expand the program in due course, based on market demand.

Our axle shafts all come with a 24 month/24,000-mile warranty. After adding prop shafts to our range last year, we're delighted to continue the expansion, as Shaftec becomes increasingly well-known and relied upon by customers up and down the country.



VALEO WIPING TECHNOLOGY THE VALEO AQUABLADE™

Discover the latest innovation in windscreen wiping technology



WHAT IS VALEO AQUABLADE™?

Valeo's patented and award-winning AquaBlade™ windscreen wipers are recognised as a major innovation in automotive technology. Compared to other types of wiper blades, they considerably improve safety, comfort, and performance.

The Need for Integrated Cleaning

Windscreen wipers have been around for a long time, so why change the design? Valeo developed AquaBlade™ in response to the need for more effective windscreen wiping due to modern vehicle design, technological advancements, and body styles, which increase the windscreen surface and make traditional wiper systems less effective.

In addition, new technology, such as cameras and other safety systems, requires the entire windscreen surface to be clean to function properly.

Valeo AquaBlade™ uses a flat blade with small, laser-cut holes that allow the washer fluid to be distributed along the entire length of the blade. It enlarges the wiping pattern and

corrects the uneven washer fluid distribution problem. In comparison, other wipers rely on spray nozzles either located under the bonnet or installed on the wiper arm.

Driver safety is also improved as the Valeo AquaBlade™ wiping system dramatically enhances wiping efficiency, reducing braking distances by up to 4 meters when travelling at 50km/h.*

Although cleaning performance is improved, Valeo AquaBlade™ uses only half of the fluid of a conventional system. This allows a smaller fluid tank to be used, reducing the average weight of the system by 2kg, helping to reduce CO2 emissions.

Valeo AquaBlade™ windscreen wipers have many benefits:

- No more cleaning washer jet obstructions.
- Faster and more thorough cleaning of the screen.
- Less driver visibility disruption during use, compared to traditional washer jet systems.

- Larger cleaning area that reaches the upper windscreen where cameras and other systems are located.
- Cleaning quality is preserved at all vehicle and wind speeds.

Some AquaBlade™ applications also include a heating element to reduce freezing during winter.

Originally launched in 2012 as Original Equipment for vehicle manufacturers such as Mercedes, Ford and Volvo, Valeo AquaBlade™ is now offered to the independent aftermarket with more than 20 part numbers, offering the same original technology in all versions: unheated, heated, and rear wiper blade applications.

Keep a look out for vehicles fitted with AquaBlade™ and call your local branch for an OE quality replacement.

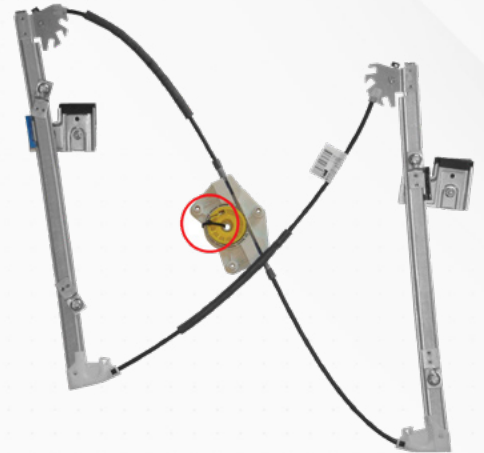
*Source: Fraunhofer Institute IOSB study on +5500 tests in real driving condition performed.

ELTA WINDOW LIFT REGULATORS ARE NOW BETTER THAN EVER AS DEMAND CONTINUES TO RISE

In response to customer demand and continuous product improvement; the most in-demand VXPRO window regulators have been re-engineered to look and fit exactly like the original part.



Aftermarket demand in general for window regulators continues to grow year-on-year, as the trend continues for larger windows in modern automotive design, combined with the need for lightweight



transportation. This is usually a cable tie looped around one of the winders to preventing its rotation, that must be removed before operating the new part.

Originally VXPRO window regulators were designed to match performance and function but in some cases were visually different to maximise manufacturing efficiency and deliver a price point suitable for the UK aftermarket. Some parts would also require small modifications such as new mount holes to fit.

However, as demand for the range has grown and volume has significantly increased; ELTA has taken feedback on board from technicians and responded to market demand for a direct, like-for-like replacement that retains an aftermarket price point.

Working closely with global manufacturing partners on the fastest moving parts, ELTA has achieved a direct replacement that:

- Looks just like the original part
- Is guaranteed to perform like the original part
- Fits original mounting points using original fixings
- Delivers incredible aftermarket value for money
- Offers complete peace of mind with a 5 year no quibble warranty

components making failure increasingly common.



FITTING TIPS

Fitting is quicker and easier than ever. Simply remove the failed part and retain original fixings. Replace with the new part using the same mount points and fixings. There are just two key points to remember...

1. Look out for tensioners

Many replacement bowden and double-bowden window regulator mechanisms that use cable to control the window will have a tensioner in place to protect the part during storage and

2. Recalibrating comfort function

Following window regulator replacement, the one touch operation will sometimes not function as expected. This is because the vehicle needs to be recalibrated in order to understand the limits of the open and closed window. The most common method to initiate calibration is to ensure that the window is fully closed and then press and hold the window up button, for three seconds.

POWER UP WITH VXPRO

ELTA VXPRO delivers a range of premium quality Window Lift Regulators at sensible prices backed by a five year warranty for complete peace of mind.

The range includes mechanisms, motors and complete kits, so whatever the diagnosis, VXPRO has the perfect solution.

Get the right part, on time!



The largest range of parts available in the UK Saves you time, hassle and money...

**To find out more contact
your local branch.**

For support and advice
call our industry leading
technical helpline on
01538 752 561 or email
cs.team@klarius.eu

Klarius
www.klarius.eu

- The Klarius range covers over 11,000 applications, fitting both popular and niche vehicles
- Parts available same day from your local distributor
- All parts are offered with a Fit First Time to ensure ease of fitment
- Guaranteed quality, independently tested, type approved and made in the UK to OE standards

BM CATALYSTS DELIVERS COMPREHENSIVE ONLINE TECHNICAL INFORMATION



Leading manufacturer of hot end emissions products, BM Catalysts, has expanded its product support offering by producing part specific instructions for installing a number of its references.

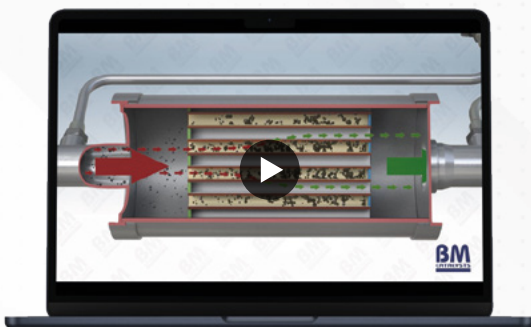
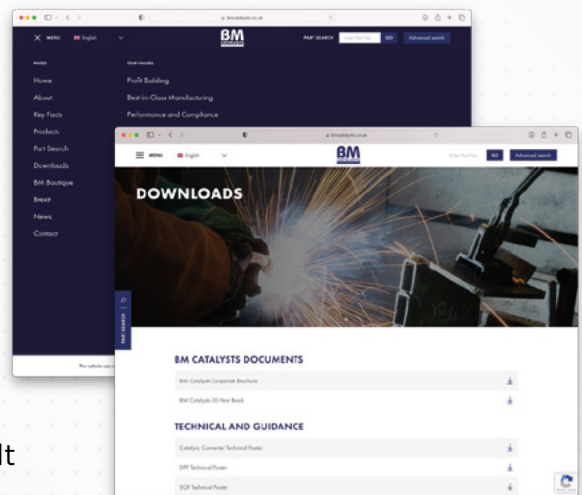
BM Catalysts' uncompromising approach to research and development, combined with a renewed push on delivering added value to its customer base, has led to the company publishing fitting guidance for nine references already to date, with more in the pipeline.

Technicians can not only benefit from BM Catalysts' clear instructions with the new guidance, but also from its recently launched animated videos, suiting technicians' busy schedules and offering as much clarity as possible.

The latest fitting guides are available to view on the specific part listings on the BM Catalysts website, and within its Downloads page. In addition to these fitting guides, BM Catalysts has also renewed its manuals for general catalytic converter and diesel particulate filter installation, as well as a producing a guide to understanding fault codes which are commonly associated with these products groups.

Holly Brailsford, marketing manager of BM Catalysts, said: "Our animated videos and fitting instructions have all been developed to help professionals within the aftermarket consume product information, which can often be quite complex, in accessible and engaging ways.

We've invested a significant amount of resource into analysing queries made through our dedicated Product Support channels to identify any recurring themes and we're confident that the fitting guides produced so far as a result of this exercise will be of real value to those who use our products."



BM Catalysts offers a wide range of high-quality emissions products, including catalytic converters, diesel particulate filters and selective catalyst reduction units, as it continues to regularly expand its product offering in order to meet ongoing market demand.

Touch-E (TE0360)

Insulated Electricians Glove



Our insulating gloves are manufactured in accordance with ISO 9001:2015 Certification, ensuring very high quality standards.

All applicable tests according to EN 60903 and IEC 60903 standards are carried out within the production site in a quality assured laboratory.

The quality approach with visual and dielectric inspection of 100% of the production offers users the guarantee of conformity.

Manufactured with a water based technology (no use of solvents), our technology, combined with the use of natural materials, provides assurance of greater care for the environment.



Class 0
1000 V AC / 1500 V DC
protection for high voltage of vehicles



GRIP
better grip on tools
and small parts



ORANGE
the colour
of electrical risk



THICKNESS
30% thinner
than traditional gloves

CHLORINATION
Easy Donning



SHAPE
respects the anatomy of the hand at rest,
limiting fatigue and ensuring excellent dexterity



**CARDBOARD
PACKAGING**



Bestplate: The Trusted Choice for Quality Number Plates & Accessories



In an increasingly competitive market, where quality and compliance are paramount, Bestplate emerges as the undisputed leader in the UK's number plate industry.

With a rich history of serving top automotive manufacturers and offering a comprehensive range of products, Bestplate has earned its reputation as the go-to supplier for number plates and related accessories. As the September registration period approaches, it is crucial for customers to have access to the right information and products to meet their requirements.



Unrivalled Supplier Relationships

Bestplate proudly holds the status of the sole approved supplier for number plates and fixings to some of the most renowned automotive brands in the world. The company's impeccable credentials are evident through its partnerships with VW, Audi, Seat, Skoda, Peugeot, Citroen, Vauxhall, Fiat, Alfa Romeo, Jeep, Nissan, and Hyundai. This exclusive arrangement speaks volumes about Bestplate's commitment to delivering exceptional products that meet the high standards set by these esteemed manufacturers.



Your Perfect Plate Awaits...

Bestplate offers a diverse range of number plates to cater to various needs. Their collection includes Classic plates, reflecting a timeless aesthetic for cars. Motorcycle plates specifically cater to two-wheeled vehicles, ensuring a perfect fit. For larger vehicles like trucks and buses, square plates are available, designed to meet size requirements.

Green plates are offered, often associated with eco-friendly or electric vehicles, showcasing environmental consciousness.

EU plates are designed in accordance with European Union standards, featuring specific country codes and design elements.

Lastly, 4D plates provide a unique touch with their raised lettering and numbers, adding a three-dimensional effect. Bestplate ensures a comprehensive selection to meet individual preferences and legal requirements.



When it comes to number plates, Bestplate leaves no room for compromise. All of their assembled number plates conform to BSAU145e, the British standard for number plate quality and performance. With Bestplate, customers can rest assured that their number plates meet the necessary legal requirements, ensuring compliance and peace of mind. The company's commitment to quality is further reinforced by their unwavering guarantee, providing customers with the utmost confidence in their purchase.

Market Leadership & Vintage Styles

With its unwavering commitment to quality, extensive product range, and exceptional customer support, Bestplate has established itself as the undisputed market leader in the UK number plate industry. Not only do they excel in providing modern number plate solutions, but they also take pride in offering vintage styles that add a touch of nostalgia and elegance to classic vehicles. Bestplate's expertise in vintage number plates further solidifies their position as the preferred choice for all number plate requirements.




IN PARTNERSHIP WITH OUR KEY SUPPLIERS



The Smart Choice for Today's Technician!

**SMART
CHOICE**
MAGAZINE

YMF CAR PARTS BRANCHES

Branch	Address	Tel.
Harrogate	Unit i3b, Hornbeam Park Oval, Harrogate, HG2 8RB	01423 223940
Layerthorpe	62 Layerthorpe, York, YO31 7YW	01904 628828
Malton	Unit 5, Seph Way, York Road Industrial Estate, Malton, YO17 6YF	01653 602700
Poppleton	Unit 13, Rose Avenue, The Rose Centre, Nether Poppleton, YO26 6RX	01904 917280
Scarborough	Unit 1, Stadium Works, Barrys Lane, Scarborough, YO12 4HA	01723 413104
Selby	Unit 11A, Selby Business Park, Selby, YO8 8LZ	01757 403300
Thirsk 	Units 19-22 Marrtree Business Park, Cedar Road, Thirsk, YO7 3FF	01845 421421

email: smart@yorkmotorfactors.co.uk | www.ymfcarparts.co.uk

THE SMART CHOICE FOR TODAY'S TECHNICIAN!



York Motor
Factors Ltd

YMF Car Parts

www.ymfcarparts.co.uk